



# Veracitor VX series

**Take control**

1,600kg – 3,500kg

Representing the solution to  
today's materials handling needs.







# All your material handling needs under control.

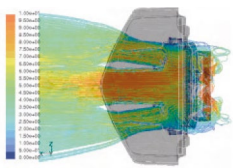
The Veracitor VX Series is a perfect illustration of the ongoing Yale commitment to innovative design, exceptional quality and industry leading performance.

The result of extensive research among customers, operators and leading experts in ergonomics and biometrics, this internal combustion engine lift truck takes productivity, operator comfort, serviceability and dependability to a new high, and cost of ownership to a new low.

Whether it's pioneering new features designed to provide more efficient handling than ever before or ingenious improvements to help optimise lift truck reliability, trust the Veracitor VX to deliver an unprecedented level of control over all your material handling operations.



# Setting the standard for operational efficiency.



Maximised airflow for enhanced cooling.

## Innovative Cooling System

The cooling system operates at lower temperatures. This offers significant improvement when it comes to cooling air flow, increasing component life and minimising the risk of overheating in heavy-duty applications. Optimised ducting and high volume tunnels allow Veracitor VX lift trucks to run longer in a cooler state. Radiators are 100% shock-proof mounted for long life.



Serpentine or square wave radiator – all models

O-ring face seals on all high pressure hydraulic connections eliminate the need for thread sealants creating leak-free joints. A superior filtration system increases the life span of all hydraulic components.

## Intellix Vehicle System Manager (VSM)

This innovative, highly advanced on-board computer is, essentially, the sort of electronic management system that is extensively used in the automotive industry. It controls the engine and transmission by monitoring and protecting the lift truck.



O-ring face seals on all high pressure hydraulic connections

A sensitive computer like this needs protection, so it is environmentally sealed to keep out water and debris. Furthermore, CANbus electronics reduce the complexity of the wiring, which have been routed well away from all heat sources.

With more features and options than ever before, the Veracitor VX Series not only meets but exceeds your specific application requirements.

There are no less than thirty-four different trucks, ranging from 2,000kg to 3,500kg, as well as five engine and four transmission options.

So, whatever your specification, rest assured there's a VX configuration that can be tailored to your most precise needs.

## Three Transmission Options

Three Yale transmissions are available:

|                         |   |
|-------------------------|---|
| <b>1600kg – 2000kg:</b> | Standard Electronic<br>Techtronix 100                   |
| <b>2000kg – 3500kg:</b> | Standard Electronic<br>Techtronix 100<br>Techtronix 200 |

There's also an array of features incorporated to deliver optimum performance, boost productivity levels and generate cost savings. The optional Autospeed Hydraulics with automatic inching control to automatically increase engine speed when hydraulics are actuated, at the same time as maintaining control over vehicle travel speed. Selectable performance settings within the eLo energy saving and HiP performance mode to provide precise application matched operation. Continuous Stability Enhancement (CSE) to automatically maintain the truck's stability during uneven surface travel.

Whether it's the ingenious controlled ramp descent or the traction speed limiter, the return to set tilt or the premium electronic monitoring, every last aspect of the VX has been designed to help you increase productivity and take control of your bottom line.





### Continuous Stability Enhancement (CSE)

- Improves lateral stability and boosts driver confidence

### Innovative cooling system

- Dramatically lower operating temperatures and much longer running times





# Comfortably more productive.

Yale has always prided itself on the intelligent ergonomics of its fork lift trucks and the Veracitor VX Series, like many a Yale truck before it, sets the standards for comfort and control.

Take the AccuTouch™ mini lever hydraulic control module with shorter reach and throw levers requiring less effort to operate. Or the exceptional user visibility afforded by the Yale Hi-Vis™ mast. In fact, wherever you look in the cabin, there's a feature designed to add to the comfort of the operator, from the low step height to the fully adjustable contoured armrest, from the interactive dash display to the rear drive handle with horn.

Add other operator friendly features such as the low noise hydraulic pump and cabin together with the seamless forward and reverse directional changes, controlled through a number of optional methods, including foot pedals or joystick control, and it's easy to see why drivers love the Veracitor VX – and employers love the way it increases their productivity.



Yale two-way directional pedal



Ergonomically designed joystick to control all of the lift truck's functions



## Auto Deceleration System

(ADS) reduces brake usage, leading to fewer brake shoe replacements and lower service costs.





# Operators prefer Veracitor VX lift trucks.

The truth of the matter is that operators prefer Veracitor VX lift trucks. Results from an independent survey of a representative sample of lift truck operators confirm this. Comfort is enhanced due to the innovative design of the operator's compartment.

## Isolated powertrain and low vibration seat

The isolated powertrain and Full Suspension Seats provide best in class Whole-Body Vibration levels of  $0.6\text{m/s}^2$ , helping to ensure that the operator remains comfortable and productive throughout the shift, while operator visibility is considerably improved through the Yale Hi-Vis™ mast. Other key features include: the optimised step height, increased shoulder clearance, easy right-sided access and ergonomically designed controls.

From features designed to minimise whole-body vibration, helping reduce fatigue and aches and pains, to the infinitely adjustable steering column to accommodate all sizes, the Veracitor VX is all about making life easier for the operator – helping them stay in complete control.

## Driving comfort

Rear driving comfort has been improved with a convenient, rear drive handle complete with horn button, optimally placed on the rear overhead guard leg. The rear drive handle, in conjunction with an optional swivel seat, creates a comfortable and secure working environment. A smaller steering wheel and the infinitely adjustable steer column accommodate operators of all sizes.

## EZ™ – LP Gas Tank Bracket

The optional EZ-Tank™ Bracket is an added feature on the standard swing-out bracket. The LP tank swings out and drops down approximately 60 degrees for effortless removal and installation.



Best in class, full suspension seat



Ergonomically designed cab controls



EZ™ – Swing out, drop down LPG bracket



# Cutting down downtime.

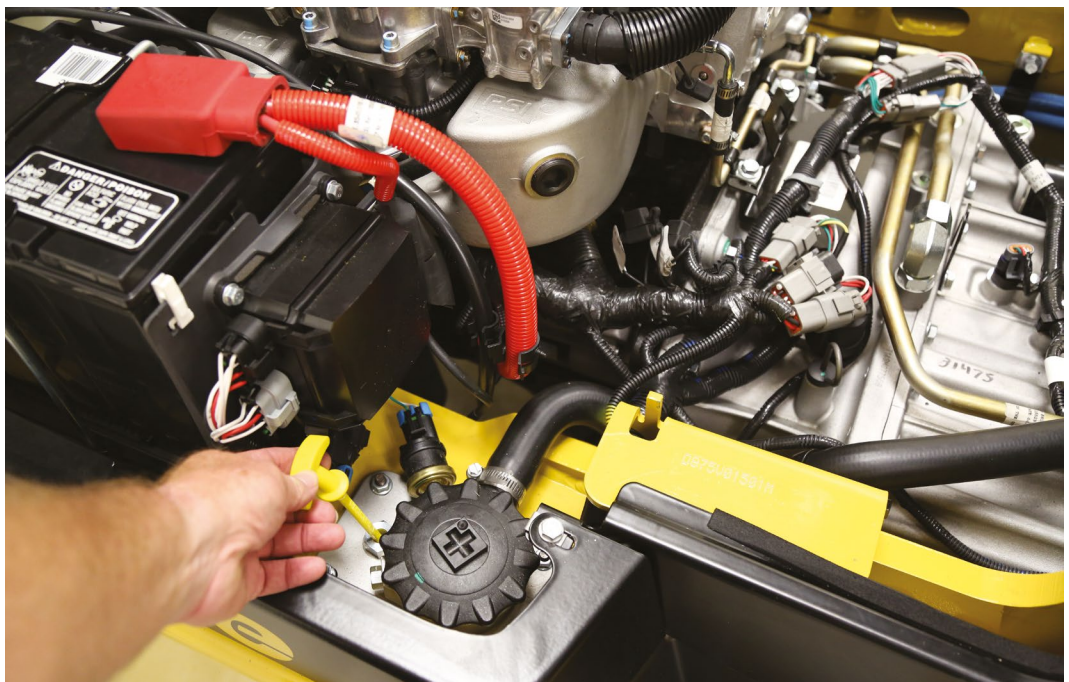
The Veracitor VX Series doesn't just make it easier to carry out vital servicing tasks. It's a truck that has been designed to actually require less maintenance.

Veracitor VX lift trucks offer best in class service access with a one-piece, rear-opening hood providing cowl-to-counterweight access. An easy to remove floor plate requires no tools and offers complete access to the powertrain.

Equipped with Intellix Vehicle Systems Manager (VSM), the VX's truck functions are continuously monitored and keeps the operator fully informed of service needs. There's also state of the art on-board diagnostics on the advanced dash display to communicate service codes, enabling quick and accurate repairs. While ingenious features such as automatic electronic inching and Auto Deceleration System reduce wear and tear, in turn reducing your service costs and adding to your bottom line.

What's more, when maintenance does need to take place, the VX Veracitor is designed to make servicing as fast, convenient and simple as possible. It's extremely easy to perform engine compartment daily checks, check and replenish coolant levels and remove the radiator filler cap.

All backed up by the most dependable and most comprehensive parts availability in the industry, the Yale Veracitor VX gives you a greater degree of control over the efficiency and uptime of your operation than ever before.













# Total truck reliability.

With the Veracitor VX Series from Yale, total reliability comes built in. Put simply, every last component has been designed to provide long-lasting performance day in, day out, year after year.

Rugged durability is at the heart of the Veracitor VX. Robust clutch packs, stronger gears and shafts, computer controlled engine and transmissions, powertrain protection systems, enhanced monitoring – they all help to boost reliability, maximise uptime and keep your truck performing at its best. There's also a cooling system creating airflow through optimised ducting and high volume tunnels, helping to dramatically increase component life and minimise the risk of overheating in heavy duty applications.

From 100% shock-proof mounted radiators to the check valves incorporated into the cushioned lift cylinders of the world-renowned Yale mast design, from the sealed connectors that enable the entire truck to be pressure washed to the O-ring face seals that create leak-free joints, the Veracitor VX delivers world-class reliability.

By utilising cutting edge technology and superior manufacturing facilities, Yale engineers have delivered the highest serviceability ratings in the industry.





# Low cost of ownership built in.

The purchase price of materials handling equipment is only one small part of the overall cost of running a fleet of equipment. There is a host of other factors to take into account including periodic maintenance, unscheduled repairs, the cost of replacement tyres, brakes and fuel. Only then can you arrive at a true lifetime cost of ownership.

The Veracitor VX Series has been designed to minimise overall operating costs throughout the life of the truck.

Take the VX brakes, for instance. The VX's Auto Deceleration System (ADS) significantly prolongs brake and tyre life, automatically slowing down the truck upon release of the throttle, reducing wear and tear.

This action minimises brake usage requirement, operator fatigue and reduces associated brake costs.

There's also the fully sealed oil immersed brakes, providing a distinct advantage in harsh and heavy duty environments.

The Veracitor VX helps you take control of fuel costs, too. In fact, with the VX at the heart of your materials handling operation, you can rest easy knowing you're utilising one of the most fuel efficient trucks in its class, offering an unrivalled 3 litres per hour fuel consumption (2,500kg diesel). Load sensing hydraulics and the password protected ECO-eLo mode all help to deliver greatly increased operational efficiency, while the five engines combine a superb performance with truly outstanding fuel economy.

Last but not least, with its uncluttered layout and ease of access, plus simplified daily checks and reduced service requirements, not to mention its world-class reliability, the Veracitor VX substantially lowers both labour costs and maintenance costs.





Knowing when to replace industrial tyres is critical – replace them too early and you risk spending too much, replace them too late and you risk machine and operator safety. Trelleborg Wheel Systems have developed Pit Stop Line tyres that let operators and fleet managers know with 100% accuracy when their tyres need replacing.

As the tyres wear down a highly visible orange band appears on the surface, a tyre will have approximately 100 hours of life remaining and that replacement tyres should be ordered and service fitting scheduled.

Typically industrial solid tyres are replaced with 25% of life still remaining as guidelines on industrial tyre safety are not well known. Choosing Pit Stop Line tyres means that by never replacing tyres too early, spend can be reduced by up to 20% over a typical 5 year lease\*.

Replacing tyres early also means needlessly taking forklifts out of service, resulting in potentially large productivity costs; Pit Stop Line tyres eliminate this downtime and keeps critical machines working.



\*based on 2 tyres per year





**Yale**<sup>®</sup>   
People. Products. Productivity.<sup>™</sup>



**NACCO Materials Handling Limited**  
trading as **Yale Europe Materials Handling**  
Centennial House  
Frimley Business Park  
Frimley, Surrey  
GU16 7SG  
United Kingdom

Tel: +44 (0)1276 538500  
Fax: +44 (0)1276 538559

[www.yale-forklifts.eu](http://www.yale-forklifts.eu)



VX brochure. Publication Part No. 290000161 Rev.05 Printed in the United Kingdom (0815HROC) EN.

**Safety:** This truck conforms to the current EU requirements. Specification is subject to change without notice. Yale, VERACITOR and  are registered trademarks. "PEOPLE, PRODUCTS, PRODUCTIVITY", PREMIER, Hi-Vis, and CSS are trademarks in the United States and certain other jurisdictions. MATERIALS HANDLING CENTRAL and MATERIAL HANDLING CENTRAL are Service Marks in the United States and certain other jurisdictions.  is a Registered Copyright. © Yale Europe Materials Handling 2013. All rights reserved. Truck shown with optional equipment. Country of Registration: England. Company Registration Number: 02636775